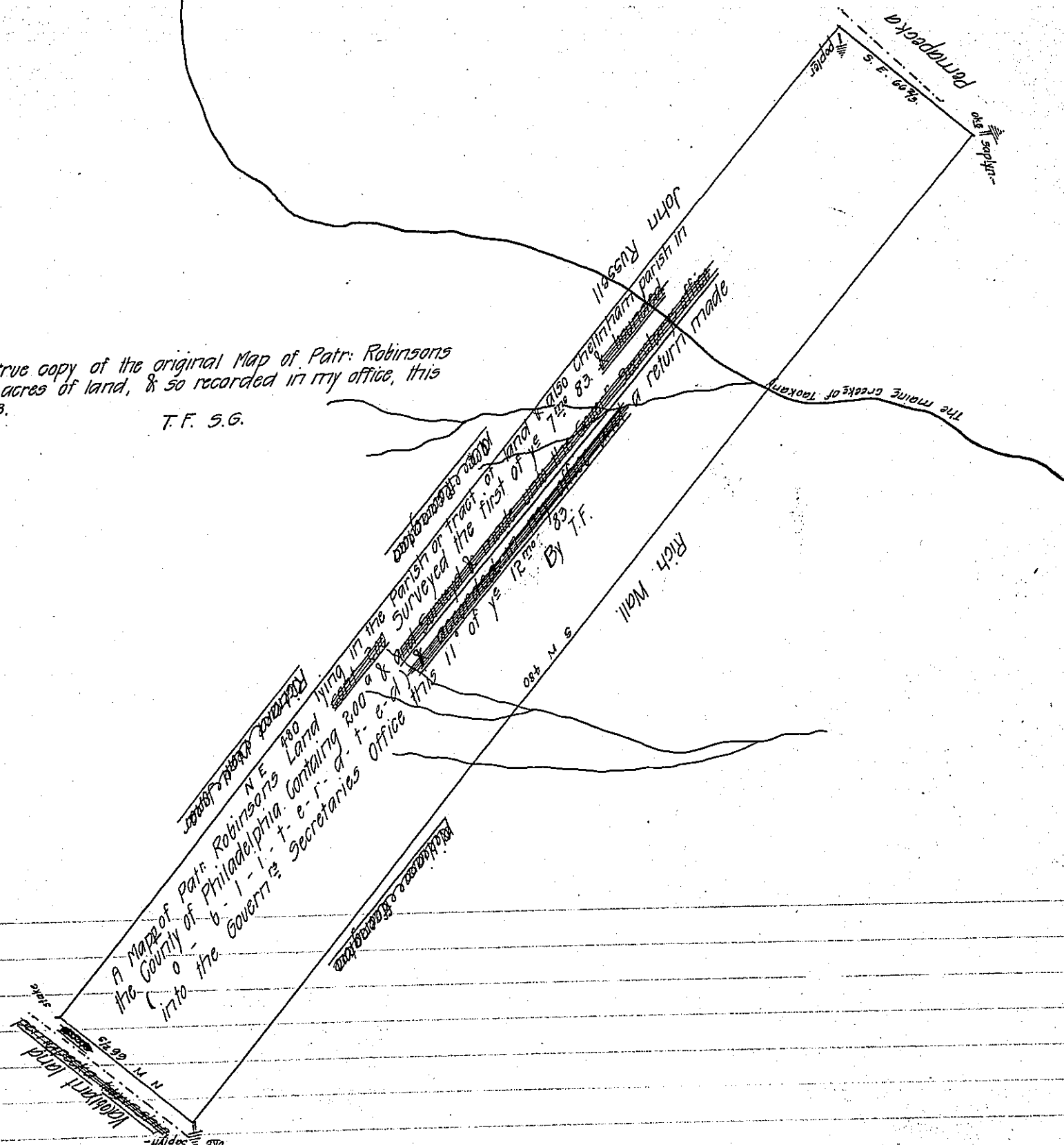


Scale of perches.
5 10 20 30 40 50 60 70 80 90 100

This is a true copy of the original Map of Patr. Robinsons two hundred acres of land, & so recorded in my office, this 11th 12^{mo} 83.

T.F. S.G.



Frank for 12th of ye 2^d moth 1683.
By virtue of a warrant bearing date ye 14th of ye first moth 1683. surveyed for Patrick Robison a certaine tract of land by Taokary Creeke now called Frank Creek Beginning at a stake near unto an oke saplyn thence by the land of Richard Wallis 480 perches S.W. to a stake by a small black oke marked for a corner thence N.W. 66 2/3 perches to a stake upon a hill neare unto a swamp thence N.E. 480 perches to a stake standing about 4 perches to the northward of a large popler tree marked for another corner thence S.E. 66 2/3 perches to the first mentioned place of beginning 9^t 200 acres of land.
This tract of land is in the parish of Cheltenham surveyed ye first of ye 7th moth 1683. J. Tho. Fairman

IN TESTIMONY that the above is a copy of the original remaining on file in the Department of Internal Affairs of Pennsylvania, made conformably to an Act of Assembly approved the 16th day of February, 1833, I have hereunto set my Hand and caused the Seal of said Department to be affixed at Harrisburg, this

third day of May 1911.

Henry Houck
Secretary of Internal Affairs.